



# research bulletin



## Inner City Rough Sleeper Street Count August 2010

The eighth Inner City Rough Sleeper Street Count was conducted on 10 August 2010. The Count located 73 adults who were unsheltered or 'sleeping rough'.

The 'Rough Sleeper Street Counts' aim to monitor levels of homelessness in the Adelaide inner city area as well as provide information about the circumstances and profile of the population. Previous Counts were conducted on 19 June and 21 August 2007; 13 May and 12 August 2008; 5 May and 11 August 2009; and 4 May 2010.

The Counts are a partnership between the Department for Families and Communities, the Social Inclusion Unit (Department of the Premier and Cabinet) and key homeless services in the inner city: Street to Home, Byron Place Day Centre, Westcare Day Centre and Hutt Street Day Centre.

The data reported in this Bulletin was collected in the morning or early afternoon of 10 August (see Appendix for the questionnaire). In the early morning, Street to Home visited the parklands and other areas around the city in order to locate people 'sleeping rough'.

The three Day Centres also approached people attending their services that day and invited their participation in completing a short survey. The methodology for the Count was very similar to that used by the Australian Bureau of Statistics (ABS) in the 2006 Census (ie the same agencies were involved in the collection of data and similar collection strategies were used).

### Accommodation of all participants

Collectors completed 325 surveys on 10 August 2010. Matching of identifiers and other information indicated that four people completed the survey twice.

The first and repeated surveys from those four people were combined into one record. Therefore, it is considered that a total of 321 individuals were in contact with participating services on the day of the Count.

Of these, 73 reported they had slept the night before in *unsheltered* circumstances and 103 were in *other accommodation*<sup>1</sup> (Table 1 overpage).

<sup>1</sup> Other accommodation includes a range of short-stay arrangements, e.g. boarding house, temporarily living at a friend's or relative's house, St Vincent de Paul Shelter, Catherine House, backpackers, hotel/motel, City Watch House, prison, remand centre, hospital, detox/sobering up unit, caravan park, and other sheltered facilities.

For more information:

Department for Families and  
Communities  
Business Affairs  
Research Unit

[research@dfc.sa.gov.au](mailto:research@dfc.sa.gov.au)

ph: 08 8413 8176

[www.dfc.sa.gov.au/research/](http://www.dfc.sa.gov.au/research/)

Given the focus on people who are 'sleeping rough' or marginally housed, analysis in this report excludes the 100 people currently living in their own home and the 45 who declined to participate in the survey (whose housing status was *unknown*).

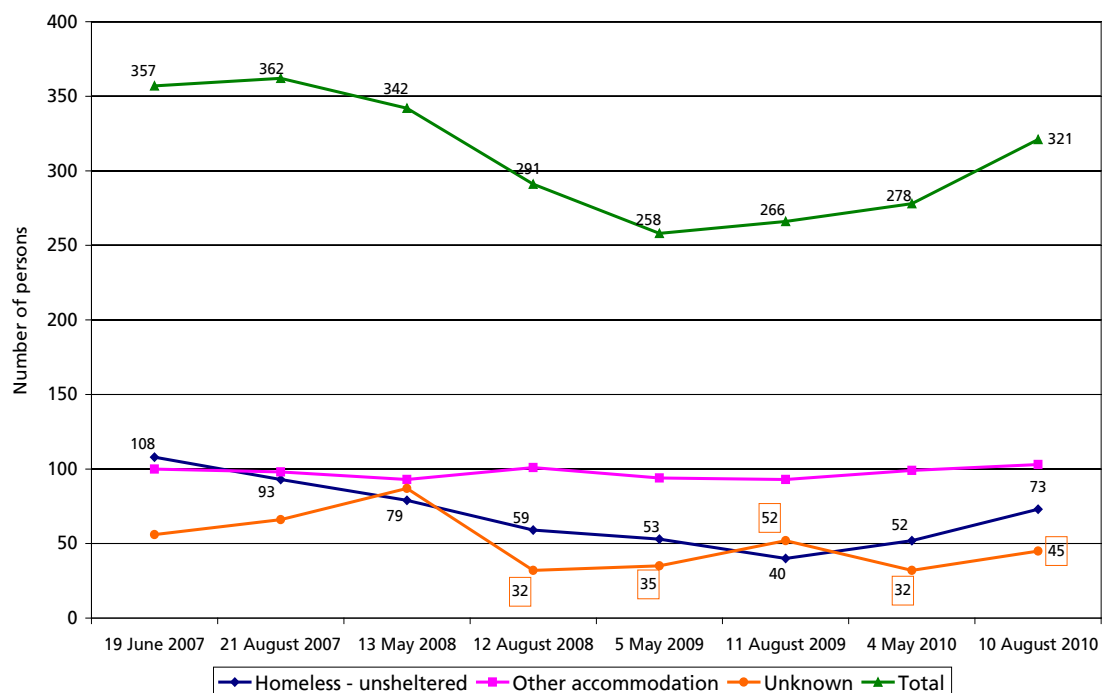
**Table 1: Type of shelter stayed in last night on 10 August 2010, individuals**

Type of shelter last night	n	%
Homeless - unsheltered	73	22.7
Other accommodation	103	32.1
Own home / flat	100	31.2
Unknown	45	14.0
<b>Total</b>	<b>321</b>	<b>100.0</b>

## Trends

An increasing number of people were in contact with the participating services over the last four Counts (Figure 1). Compared to the May 2010 Count, the current Count identified a rise in numbers of *unsheltered* from 52 to 73. Over the eight Counts, the numbers of people in *other accommodation* has remained relatively stable. The number of people who declined to participate grew to 45 people from 32 in the May 2010 Count.

**Figure 1: Total number of participants, homeless – unsheltered, other accommodation and unknown.**



## Current accommodation

Most commonly, those who were *unsheltered* were staying in the streets or the parklands (67%), with all but seven in the Adelaide city area (Table 2 and Table 3).

The category of '*other accommodation*' includes a range of short-stay arrangements, the majority of which could be categorized as secondary or tertiary homelessness. Most respondents in this group were in boarding houses (44%).

**Table 2: Specific type of shelter used last night, 10 August 2010**

Type of shelter last night	n	%
<b>Homeless - unsheltered</b>		
Car	5	6.8
Squat	6	8.2
Street / park	49	67.1
Tent / camped out	3	4.1
Unsheltered (other / unknown type)	10	13.7
<b>Total</b>	<b>73</b>	<b>100.0</b>
<b>Other accommodation</b>		
Backpackers	3	2.9
Boarding House	45	43.7
Caravan park	1	1.0
Detox. / sobering up unit	15	14.6
Friend's or relative's house (temporary)	18	17.5
Hospital	1	1.0
Hotel / motel	5	4.9
Sharehouse	1	1.0
Sheltered – other	5	4.9
St Vincent de Paul Shelter	9	8.7
<b>Total</b>	<b>103</b>	<b>100.0</b>

**Table 3: Location of shelter used last night, 10 August 2010**

Location of shelter last night	Homeless - unsheltered		Other accommodation	
	n	%	n	%
Adelaide city or parklands	66	90.4	77	74.8
Adelaide suburbs	7	9.6	24	23.3
<b>Other</b>	<b>0</b>	<b>0.0</b>	<b>2</b>	<b>1.9</b>
<b>Total</b>	<b>73</b>	<b>100.0</b>	<b>103</b>	<b>100.0</b>

Participants were asked how long they had been staying in the accommodation they used on the previous night (Table 4 and Table 5). The median length of stay for the *unsheltered* was 20 weeks, ranging from one night to 20 years (for one person). For those in *other accommodation*, the median was 6 weeks, with a range from one night to 28 years (for one man in a boarding house).

**Table 4: Length of time at accommodation used last night, 10 August 2010**

Length of time at shelter used last night	Homeless - unsheltered		Other accommodation	
	n	%	n	%
1 week or less	5	6.8	26	25.2
2 to 4 weeks	13	17.8	21	20.4
5 to 12 weeks	6	8.2	8	7.8
13 weeks to 6 months	18	24.7	13	12.6
7 to 12 months*	15	20.5	8	7.8
More than 1 to 2 years	4	5.5	10	9.7
More than 2 years	9	12.3	12	11.7
Not Stated	3	4.1	5	4.9
<b>Total</b>	<b>73</b>	<b>100.0</b>	<b>103</b>	<b>100.0</b>

\* People who have been staying at their current accommodation for exactly 12 months (1 year) were included in this group.

**Table 5: Length of time (weeks) at accommodation used last night, 10 August 2010**

Type of shelter last night	n*	Median weeks	Minimum Weeks	Maximum Weeks
<b>Homeless - unsheltered</b>				
Car	5	4	<1	76 (1.5 yrs)
Squat	6	2	<1	1040 (20 yrs)
Street / park	46	26	1	780 (15 yrs)
Tent / camped out	3	32	26	208 (4 yrs)
Unsheltered (other / unknown type)	10	22	<1	156 (3 yrs)
<b>Total</b>	<b>70</b>	<b>20</b>	<b>&lt;1</b>	<b>1040 (20 yrs)</b>
<b>Other accommodation</b>				
Backpackers	3	3	1	26
Boarding House	43	36	<1	1456 (28 yrs)
Caravan park	1	3		
Detoxification / sobering up unit	14	2	<1	520 (10 yrs)
Friend's or relative's house (temporary)	18	1	<1	12
Hospital	0			
Hotel / motel	5	20	<1	208 (4 yrs)
Sharehouse	1	26		
Sheltered – other	4	1.5	<1	4
St Vincent de Paul Shelter	9	2	<1	260 (5 yrs)
<b>Total</b>	<b>98</b>	<b>6</b>	<b>&lt;1</b>	<b>1456 (28 yrs)</b>

"<1" indicates less than 1 week

\* Information was not recorded for some respondents

## Recent housing history

To provide an indication of recent housing history, respondents were asked to indicate where else they had been staying in the past twelve months<sup>2</sup>. Of those who were *unsheltered*, 11 (15%) reported they had been in their own house or flat for some period (compared with 15 (15%) in *other accommodation*) (Table 6). About 30% of respondents in *other accommodation* had experienced 'sleeping rough' at some time in the past twelve months.

<sup>2</sup> Result should be interpreted with caution as information on accommodation history may be incomplete.

**Table 6: Types of accommodation used in last twelve months (including current accommodation)\* †**

Type of accommodation	Homeless - unsheltered		Other accommodation		Total	
	n	%	n	%	n	%
Primary homeless	73	100.0	32	31.1	105	59.7
Boarding house	14	19.2	57	55.3	71	40.3
Friend's or relative's house	8	11.0	27	26.2	35	19.9
Own home	11	15.1	15	14.6	26	14.8
St Vincent de Paul Shelter	4	5.5	17	16.5	21	11.9
Detox. / Sobering up unit	1	1.4	17	16.5	18	10.2
Hotel / motel	3	4.1	7	6.8	10	5.7
Prison	3	4.1	5	4.9	8	4.5
Sheltered – other	3	4.1	5	4.9	8	4.5
Hospital	1	1.4	7	6.8	8	4.5
Catherine House	1	1.4	6	5.8	7	4.0
Caravan	2	2.7	3	2.9	5	2.8
Backpackers	1	1.4	4	3.9	5	2.8
Remand centre	1	1.4	1	1.0	2	1.1
City Watch House	0	0.0	2	1.9	2	1.1
Sharehouse	0	0.0	1	1.0	1	0.6
<b>Total</b>	<b>73</b>	<b>100.0</b>	<b>103</b>	<b>100.0</b>	<b>176</b>	<b>100.0</b>

\* More than one type of shelter used in the last twelve months could be indicated.

† One respondent in *other accommodation* who has been at their current shelter for less than 12 months did not indicate another type of shelter used within the last 12 month.

Over half of those who were *unsheltered* reported having used another type of accommodation (i.e. aside from *unsheltered*) in the last twelve months, compared to around 70% of those in *other accommodation* (Table 7). Overall, *unsheltered* respondents had used fewer forms of accommodation than those in *other accommodation*.

**Table 7: Number of types of accommodation used in last twelve months<sup>3</sup>**

Types of accommodation used	Homeless - unsheltered		Other accommodation	
	n	%	n	%
1	33	45.2	34	33.0
2	33	45.2	49	47.6
3	6	8.2	13	12.6
4 or more	1	1.4	7	6.8
<b>Total</b>	<b>73</b>	<b>100.0</b>	<b>103</b>	<b>100.0</b>

In terms of the accommodation in which they spent most time in the past year, just over 35% (or 62) of respondents reported having spent most time as *unsheltered* (Table 8).

**Table 8: Accommodation spent most time at in past twelve months**

Types of accommodation	Homeless - unsheltered		Other accommodation		Total	
	n	%	n	%	n	%
Primary homeless	43	58.9	19	18.4	62	35.2
Boarding house	6	8.2	35	34.0	41	23.3
Own home	6	8.2	9	8.7	15	8.5
Sheltered – other	3	4.1	0	0.0	3	1.7
Friend's or relative's house	2	2.7	6	5.8	8	4.5
Hotel / motel	1	1.4	2	1.9	3	1.7
St Vincent de Paul Shelter	0	0.0	1	1.0	1	0.6
Catherine House	0	0.0	2	1.9	2	1.1
Backpackers	0	0.0	2	1.9	2	1.1
Prison	0	0.0	4	3.9	4	2.3
Detox. / Sobering up unit	0	0.0	4	3.9	4	2.3
Sharehouse	0	0.0	1	1.0	1	0.6
Not stated	12	16.4	18	17.5	30	17.0
<b>Total</b>	<b>73</b>	<b>100.0%</b>	<b>103</b>	<b>100.0%</b>	<b>176</b>	<b>100.0%</b>

Respondents had usually spent most of the last twelve months in the Adelaide metropolitan area (Table 9). Of the 21 who had been mostly interstate, 8 were mostly in Victoria, 4 in Queensland, 3 in the Northern Territory, 3 in Western

<sup>3</sup> It should be noted that only moves *between*, rather than *within* accommodation types, were recorded, which means an undercount of moves is likely. For example, an individual could have moved between different boarding houses, but only one accommodation type (boarding house) was recorded.

Australia and 2 in New South Wales (Table 10)<sup>4</sup>. Six Aboriginal or Torres Strait Islander participants had been mostly interstate in the last twelve months, 2 in the Northern Territory and 1 in New South Wales.

**Table 9: Location of accommodation spent most time at in the last twelve months**

Location	Homeless - unsheltered		Other accommodation	
	n	%	n	%
Adelaide metro	59	80.8	83	80.6
Country SA	4	5.5	6	5.8
Interstate	9	12.3	12	11.7
Not stated	1	1.4	2	1.9
<b>Total</b>	<b>73</b>	<b>100.0</b>	<b>103</b>	<b>100.0</b>

**Table 10: Location of interstate accommodation spent most time at in the last twelve months**

Interstate Location	Homeless - unsheltered	Other accommodation
	n	n
New South Wales	0	2
Northern Territory	1	2
Queensland	3	1
Tasmania	0	0
Victoria	5	3
Western Australia	0	3
Not Stated	0	1
<b>Total</b>	<b>9</b>	<b>12</b>

<sup>4</sup> One respondent who had been mostly inter-state did not identify the state which he or she had spent most time in.



## Demographics

There were 30 women recorded in the Count (17%), 11 of whom were *unsheltered* (Table 11 and Table 12). Whilst most respondents were aged between 25 and 64 years, 8 (3 *unsheltered* and 5 in *other accommodation*) were under 25 years old (4.5%), and 11 (3 *unsheltered* and 8 in *other accommodation*) were aged over 65 years (6.3%). Thirty-eight Aboriginal or Torres Strait Islander participants were recorded (22%), 11 of whom were *unsheltered*.

**Table 11: Demographics: *Homeless - unsheltered*, 10 August 2010**

	Male		Female		Not stated		Total	
	n	%	n	%	n	%	n	%
<b>Cultural background</b>								
Aboriginal*	7	11.7	4	36.4	0	0.0	11	15.1
Non Indigenous	49	81.7	7	63.6	2	100.0	58	79.5
Not stated	4	6.7	0	0.0	0	0.0	4	5.5
<b>Country of birth</b>								
Australia	47	78.3	9	81.8	1	50.0	57	78.1
Other	13	21.7	2	18.2	0	0.0	15	20.5
Not stated	0	0.0	0	0.0	1	50.0	1	1.4
<b>Age groups</b>								
Under 18	0	0.0	1	9.1	0	0.0	1	1.4
18 to 24	1	1.7	1	9.1	0	0.0	2	2.7
25 to 34	10	16.7	3	27.3	0	0.0	13	17.8
35 to 44	23	38.3	3	27.3	1	50.0	27	37.0
45 to 54	17	28.3	1	9.1	1	50.0	19	26.0
55 to 64	6	10.0	1	9.1	0	0.0	7	9.6
65 and over	3	5.0	0	0.0	0	0.0	3	4.1
Not stated	0	0.0	1	9.1	0	0.0	1	1.4
<b>Total</b>	<b>60</b>	<b>100.0</b>	<b>11</b>	<b>100.0</b>	<b>2</b>	<b>100.0</b>	<b>73</b>	<b>100.0</b>

\* No respondent identified themselves as a Torres Strait Islander.

**Table 12: Demographics: *Other accommodation*, 10 August 2010**

	Male		Female		Unknown		Total	
	n	%	n	%	n	%	n	%
<b>Cultural background</b>								
Aboriginal*	20	24.1	7	36.8	0	0.0	27	26.2
No (non-Indigenous)	60	72.3	12	63.2	1	100.0	73	70.9
Not stated	3	3.6	0	0.0	0	0.0	3	2.9
<b>Country of birth</b>								
Australia	71	85.5	15	78.9	1	100.0	87	84.5
Other	12	14.5	3	15.8	0	0.0	15	14.6
Not stated	0	0.0	1	5.3	0	0.0	1	1.0
<b>Age groups</b>								
Under 18	0	0.0	0	0.0	0	0.0	0	0.0
18 to 24	4	4.8	1	5.3	0	0.0	5	4.9
25 to 34	16	19.3	2	10.5	1	100.0	19	18.4
35 to 44	26	31.3	6	31.6	0	0.0	32	31.1
45 to 54	17	20.5	4	21.1	0	0.0	21	20.4
55 to 64	13	15.7	4	21.1	0	0.0	17	16.5
65 and over	7	8.4	1	5.3	0	0.0	8	7.8
Not stated	0	0.0	1	5.3	0	0.0	1	1.0
<b>Total</b>	<b>83</b>	<b>100.0</b>	<b>19</b>	<b>100.0</b>	<b>1</b>	<b>100.0</b>	<b>103</b>	<b>100.0</b>

\* One male respondent identified himself as a Torres Strait Islander

## Children

One respondent reported having a six year old child currently in their care. This respondent was reportedly staying in a detoxification unit (for 2 months) and that they had previously been living in their own home.

## Multiple service usage

Almost 40% of *unsheltered* respondents (n=28) and 35% of respondents in *other accommodation* (n=38) reported they had used or intended to use another inner city service(s) on the day of the Count. Westcare Day Centre was the service most frequently cited.

## Individual identifiers

As in previous Counts, all respondents were asked if they were willing to have an individual identifier recorded on the form (initials; month and year of birth; gender). 198 (or 62%) of respondents (including those in their own homes) provided this information (Table 13). Of these, 55 (or 28%) were currently *unsheltered* and 70 (or 35%) were in *other accommodation*. Around 75% of respondents who were *unsheltered* and 68% who were in other accommodation provided identifiers.

Of the 73 people who were unsheltered, 18 (or 25%) were identified as having participated in at least one previous Count. Of the 103 people who were in *other accommodation*, 18 (or 17%) were identified as having participated in at least one previous Count. Across the total 321 respondents, only one had participated in all seven Counts. This person is currently staying in a Boarding House.

**Table 11: Demographics: *Homeless - unsheltered*, 10 August 2010**

	Homeless - unsheltered		Other		All Respondents	
	n	%	n	%	n	%
Number of respondents	73	100.0	103	100.0	321	100.0
Respondents with identifier	55	75.3	70	68.0	198	61.7
In Aug 2010 and No previous Counts	37	50.7	52	50.5	127	39.6
In Aug 2010 and One previous Count	11	15.1	9	8.7	36	11.2
In Aug 2010 and Two previous Counts	2	2.7	3	2.9	15	4.7
In Aug 2010 and Three previous Counts	2	2.7	4	3.9	9	2.8
In Aug 2010 and Four previous Counts	3	4.1	1	1.0	6	1.9
In Aug 2010 and Five previous Counts	0	0.0	0	0.0	2	0.6
In Aug 2010 and Six previous Counts	0	0.0	0	0.0	2	0.6
In Aug 2010 and Seven previous Counts	0	0.0	1	1.0	1	0.3
Total	73	100.0	103	100.0	321	100.0

For more information about the *Inner City Rough Sleeper Street Count*, including information about previous Counts, please visit the Department for Families and Communities Research Unit webpage at [www.dfc.sa.gov.au/research/](http://www.dfc.sa.gov.au/research/)

© Department for Families and Communities

Printed September 2010  
Pub Number: DFC B091

The information in this publication can be provided in an alternative format or another language on request. Please contact (08) 8413 8176.

## INNER CITY AGENCY COUNT

1. Have you already completed a survey today? (If Yes, **do not** ask any further questions or complete form)
2.  **Declined to participate in the survey**  
No more Questions (By observation fill out Questions 10, 11, 12 and 17)
3.  **Incapacitated to participate in the survey**  
No more Questions (By observation fill out Questions 10, 11, 12 and 17)
4. Where did you sleep last night?  
(eg park, car, own home, boarding house or homeless shelter)
5. Where was this located? (Please tick one box only) \_\_\_\_\_  
 Adelaide city or parklands     Adelaide suburbs     Other, please state
6. How long have you been staying there/ sleeping out? \_\_\_\_\_  
 (If answer is **more than 12 months** go to Q.10)
7. Where else have you been staying in the last 12 months? (Tick as many as apply)
 

<input type="checkbox"/> Primary homeless (eg streets/ park/ squat/ car)	<input type="checkbox"/> Hotel / motel
<input type="checkbox"/> Boarding house	<input type="checkbox"/> City watchhouse
<input type="checkbox"/> Own house or flat	<input type="checkbox"/> Prison
<input type="checkbox"/> At a friend's or relative's house (temporary)	<input type="checkbox"/> Remand Centre
<input type="checkbox"/> St Vincent de Paul shelter	<input type="checkbox"/> Hospital
<input type="checkbox"/> Catherine House	<input type="checkbox"/> Detox / sobering up unit
<input type="checkbox"/> Backpackers	<input type="checkbox"/> Caravan park
<input type="checkbox"/> Other please state	
8. Where did you spend most time in the last 12 months? \_\_\_\_\_  
(please indicate one of the above from Q.7, please do not provide a location)
9. What location did you spent most of your time in the last 12 months? (Please tick one box only)
 

<input type="checkbox"/> Adelaide metro	<input type="checkbox"/> Country South Australia	<input type="checkbox"/> Interstate (please indicate which state)	Vic <input type="checkbox"/>
			WA <input type="checkbox"/>
			Qld <input type="checkbox"/>
			NSW <input type="checkbox"/>
			Tas <input type="checkbox"/>
			NT <input type="checkbox"/>
			ACT <input type="checkbox"/>
10. What is your age?      years
11. What is your country of birth?  
 Australia     Other \_\_\_\_\_

12. Are you of Aboriginal or Torres Strait Islander origin?  
 No       Yes, Aboriginal       Yes, Torres Strait Islander

13. Are you here by yourself or with your partner or other family member?

Presenting Family Unit

- Single Person  
 Single with Child/ren  
 Couple  
 Couple with Child/ren  
 Other \_\_\_\_\_

14. Do you have children currently living with you?

- Yes  
 No  
 Noted on partner's form

15. How old are they?

\_\_\_\_\_

16. Have you or will you use another inner city service today?

- No  
 Yes Name(s): \_\_\_\_\_

17. Is this person male or female? (By observation)

- Male       Female

We will be doing this survey again next year. It would be very helpful for us to have some idea of how many people who were here today are also here when we do the next count, and if their circumstances and housing have changed. It's entirely up to you, but would you mind letting me write down your initials and months and year of birth? This information will be given to the Research Unit in the Department for Families and Communities who will keep it confidential and safe and will be used for statistical purposes only.

- No      Survey completed. Thank the participant for their time.  
 Yes      Fill out boxes below

First name initial	Last name initial

What is your month & year of birth?

MONTH	YEAR
<input type="text"/>	<input type="text"/>

SURVEY COMPLETED. THANK THE PARTICIPANT FOR THEIR TIME.