



**Government of
South Australia**

Our response to the Disability Royal Commission

Recommendations about what to do next

Easy Read version



How to use this document



The Government of South Australia wrote this document.

When you read the word 'we', it means the Government of South Australia.



This document is part of our response to the Disability Royal Commission.

It is about part **12** of their final report.



We wrote this information in an easy to read way.

We use pictures to explain some ideas.

Bold
Not bold

We wrote some important words in **bold**.

This means the letters are thicker and darker.



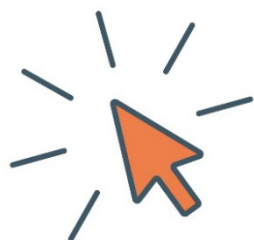
We explain what these bold words mean.

There is a list of these words on page 23.



This Easy Read plan is a summary of our response to the Disability Royal Commission.

This means it only includes the most important ideas.



You can find the other document on our website.

www.dhs.sa.gov.au/disability-royal-commission



You can ask for help to read this document.

A friend, family member or support person may be able to help you.



We recognise Aboriginal peoples as the traditional owners of the land we live on – South Australia.



They were the first people to live on and use the:

- land
- waters.



We also recognise First Nations peoples who:

- live in South Australia now
- visit South Australia.

What's in this document?

About the Disability Royal Commission 5

About the recommendations 6

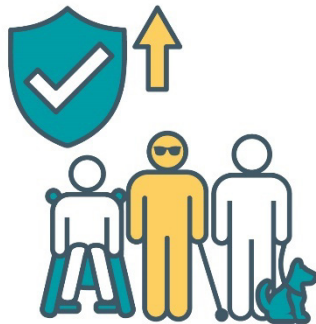
Our response to the recommendations 7

What we will do next 20

Word list 23

Contact us 25

About the Disability Royal Commission



The Australian Government created a **royal commission** to find out how to make our community safer for people with disability.



A royal commission is an official way of looking into a big problem.

It helps us work out what:

- has gone wrong
- we need to improve.



We call it the Disability Royal Commission.



The Disability Royal Commission ran from **2019** to **2023**.

About the recommendations



The Disability Royal Commission shared ideas about what governments and services should change.

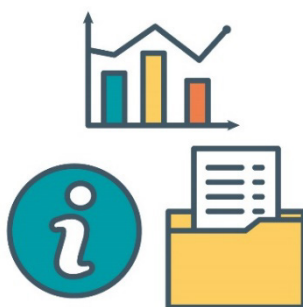
We call these ideas **recommendations**.



This document explains our response to recommendations about what governments need to do next.

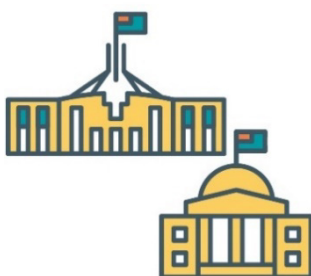


This includes recommendations about making sure governments have good **data** about disability.



When we talk about data, we mean:

- facts
- information
- records.



We are working on some of the recommendations with:

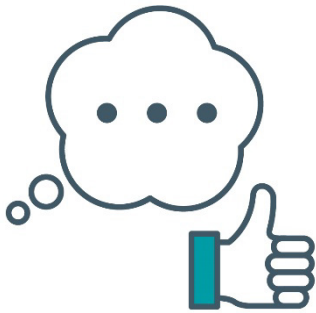
- the Australian Government
- other state and territory governments.

Our response to the recommendations

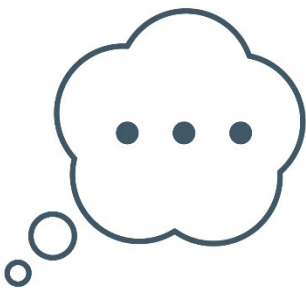
On the following pages we explain the recommendations we:



- agree with



- mostly agree with



- need to think more about.

Respond to the recommendations



The Disability Royal Commission shared a recommendation about how governments should respond to their ideas.



The recommendation said governments should share their responses by **31 March 2024**.

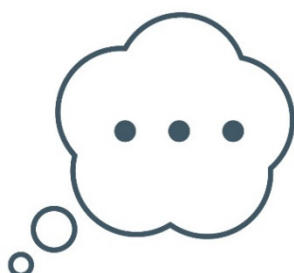
Governments should share which recommendations they:



- agree with



- mostly agree with



- need to think more about.

The recommendation also says governments should share:



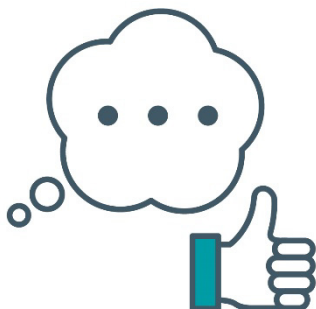
- how they will support the recommendations they agree with



- why they don't agree with some recommendations



- when they will decide what to do about some recommendations.



We mostly agree with the goals in this recommendation.

Report on work for the recommendations



The Disability Royal Commission shared recommendations about how governments should report on their work for the recommendations.



One recommendation says governments should report to the Disability Reform Ministerial Council (DRMC).



The DRMC is a group of **ministers** from around Australia who work together to improve laws for people with disability.



A minister leads an area of government.



The recommendation says governments should report to the DRMC every **6 months**.

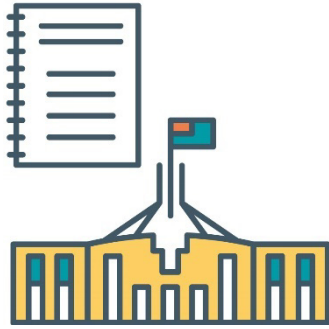
Governments should share information about:



- the work they are doing for each recommendation



- any risks or issues they have found.



One recommendation says the Australian Government should report on the work governments are doing for each recommendation.



From 2025, the Australian Government should report on the work of governments every year.



We mostly agree with the goals in these recommendations.

Data from governments



The Disability Royal Commission shared recommendations to improve how governments collect data.



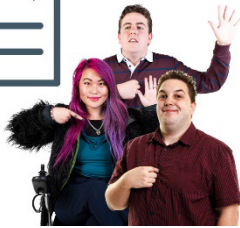
One of the recommendations says governments should work with the DRMC to create a way for them to collect data in the same way.

This includes agreeing on a set of questions to ask people about their disability.



Governments must:

- work with people with disability to create these questions
- agree on these questions by **December 2024**.



One of the recommendations says governments should make a plan to collect more data about people with disability.

This includes data about different groups of people with disability.

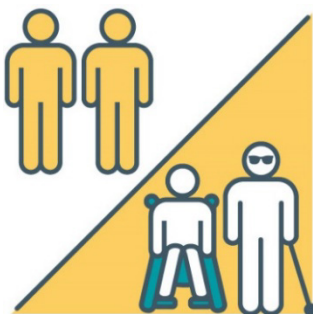


For example:

- women with disability
- children and young people with disability
- First Nations people with disability.



It also includes data about people with disability in **segregated** settings, such as schools.



When something is segregated, it keeps people with disability separate from people without a disability.



This recommendation says this plan should be part of Australia's Disability Strategy 2021–2031.



Australia's Disability Strategy 2021–2031 aims to support people with disability in all areas of their life.



We mostly agree with the goals in these recommendations.

Data from mainstream services



The Disability Royal Commission shared a recommendation to collect more data about people with disability from **mainstream services**.



Mainstream services are services for everyone in the community to use.



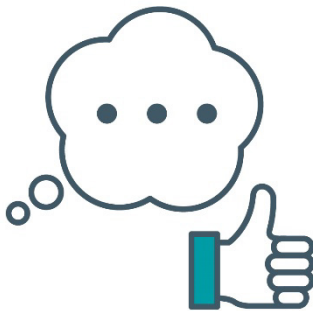
The recommendation says governments should create a plan to collect more data about people with disability from mainstream services.



By **June 2025**, governments should share a plan that includes a set of questions to ask people about their disability.



Mainstream services can use these questions to collect the data.



We mostly agree with the goals in this recommendation.

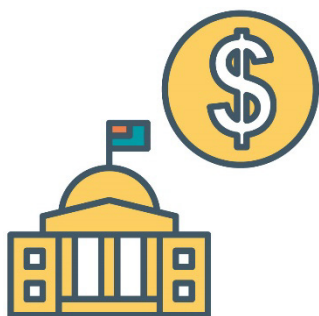
Support the National Disability Data Asset



The Disability Royal Commission shared recommendations to support the National Disability Data Asset (NDDA).



The NDDA collects data from different parts of the government to help us understand the lives of people with disability.

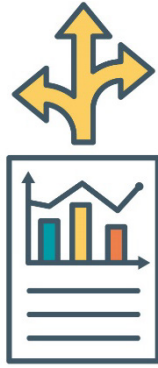


The recommendation says that governments should keep supporting the NDDA with **funding**.

Funding is money from the government that pays for services and supports.



Governments should share information every year about the NDDA data.



Governments should also use the NDDA to collect data for different projects.

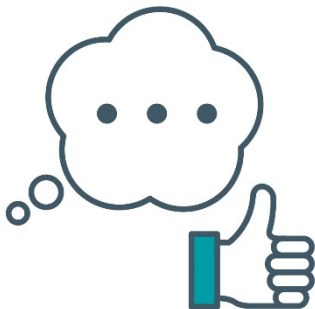


For example, data about what causes people with disability to be more at risk of **violence**.



Violence is when someone:

- hurts you
- scares you
- controls you.



We mostly agree with the goals in this recommendation.

What we will do next



We want to thank everyone who took part in:

- the Disability Royal Commission
- sharing their ideas about the recommendations.



To support our response to the recommendations,
we will work with our community.

This includes:



- people with disability



- families and carers



- service providers



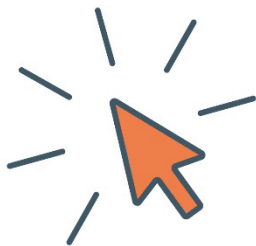
- organisations that speak up for people with disability.



Over the next 12 months, we will work with our community to decide what to do about some of the recommendations.



We will also share information about how we will report on the work we do.

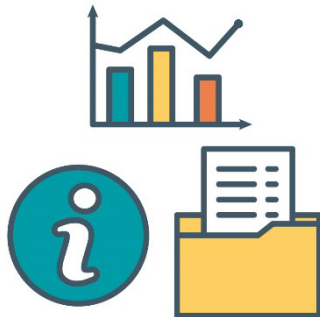


You can learn more on our website.

www.dhs.sa.gov.au/disability-royal-commission

Word list

This list explains what the **bold** words in this document mean.



Data

When we talk about data, we mean:

- facts
- information
- records.



Funding

Funding is money from the government that pays for services and supports.



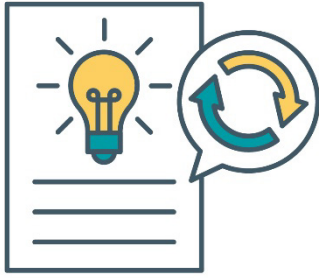
Mainstream services

Mainstream services are services for everyone in the community to use.



Minister

A minister leads an area of government.



Recommendations

The Disability Royal Commission shared ideas about what governments and services should change.

We call these ideas recommendations.

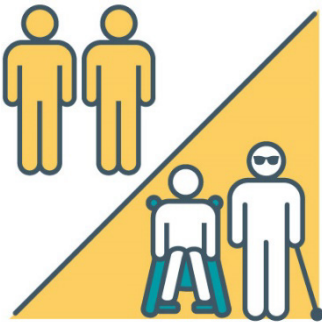
Royal commission



A royal commission is an official way of looking into a big problem.

It helps us work out what:

- has gone wrong
- we need to improve.



Segregated

When something is segregated, it keeps people with disability separate from people without a disability.

Violence



Violence is when someone:

- hurts you
- scares you
- controls you.

Contact us



You can call us.

(08) 8415 4383



You can send us an email.

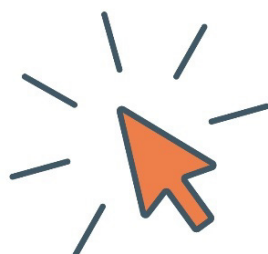
DHSDisabilityRoyalCommission@sa.gov.au



You can write to us.

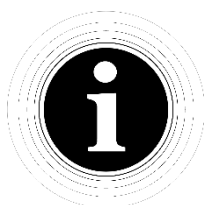
GPO Box 292

Adelaide SA 5001



You can visit our website.

www.dhs.sa.gov.au/disability-royal-commission



The Information Access Group created this Easy Read document using stock photography and custom images.

The images may not be reused without permission.

For any enquiries about the images, please visit

www.informationaccessgroup.com.

Quote job number 5839-L.