



**Government of  
South Australia**

Our response to the Disability Royal Commission

# **Recommendations about accessible services and choice**

Easy Read version



## How to use this document



The Government of South Australia wrote this document.

When you read the word 'we', it means the Government of South Australia.



This document is part of our response to the Disability Royal Commission.

It is about part **6** of their final report.



We wrote this information in an easy to read way.

We use pictures to explain some ideas.

**Bold**  
Not bold

We wrote some important words in **bold**.

This means the letters are thicker and darker.



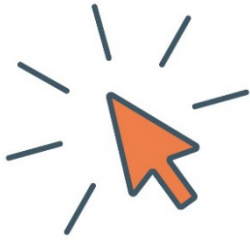
We explain what these bold words mean.

There is a list of these words on page **28**.



This Easy Read plan is a summary of our response to the Disability Royal Commission.

This means it only includes the most important ideas.



You can find the other document on our website.

[www.dhs.sa.gov.au/disability-royal-commission](http://www.dhs.sa.gov.au/disability-royal-commission)



You can ask for help to read this document.

A friend, family member or support person may be able to help you.



We recognise Aboriginal peoples as the traditional owners of the land we live on – South Australia.



They were the first people to live on and use the:

- land
- waters.



We also recognise First Nations peoples who:

- live in South Australia now
- visit South Australia.

# What's in this document?

About the Disability Royal Commission 5

---

About the recommendations 6

---

Our response to the recommendations 8

---

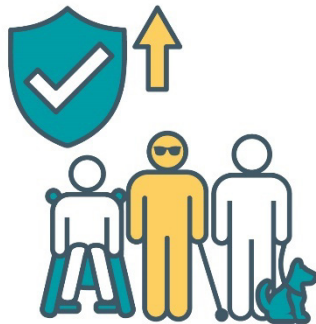
Word list 28

---

Contact us 32

---

# About the Disability Royal Commission



The Australian Government created a **royal commission** to find out how to make our community safer for people with disability.



A royal commission is an official way of looking into a big problem.

It helps us work out what:

- has gone wrong
- we need to improve.

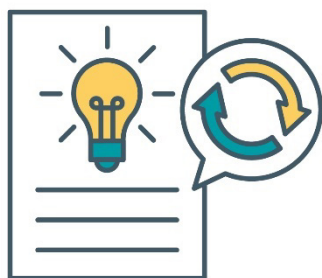


We call it the Disability Royal Commission.



The Disability Royal Commission ran from **2019** to **2023**.

## About the recommendations



The Disability Royal Commission shared ideas about what governments and services should change.

We call these ideas **recommendations**.



This document explains our response to recommendations about the **rights** of people with disability to:

- make decisions
- control their own life.



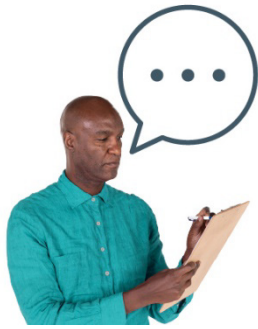
Rights are rules about how everyone must treat you:

- fairly
- equally.



These recommendations include laws about **guardians**.

A guardian is someone who can make decisions for you when you can't make your own decisions.



This document explains our response to recommendations about **restrictive practices**.

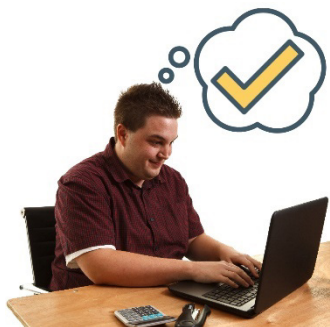


Restrictive practices are actions that stop people from:

- moving
- doing what they want.

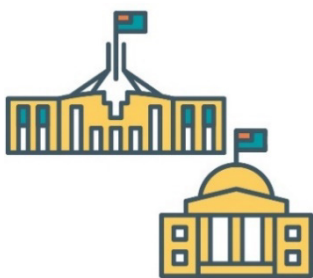


This document also explains our response to recommendations about **accessible** services for people with disability.



When services are accessible, they are easy to:

- find and use
- understand.



We are working on some of the recommendations with:

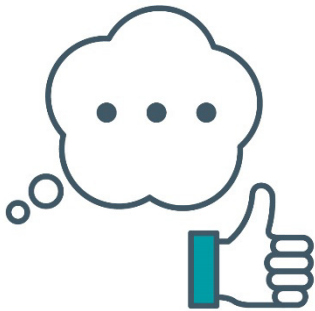
- the Australian Government
- other state and territory governments.

## Our response to the recommendations

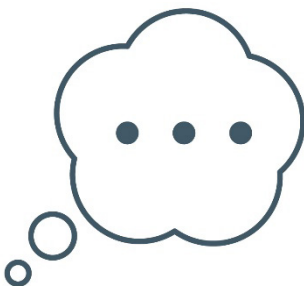
On the following pages we explain the recommendations we:



- agree with



- mostly agree with



- need to think more about.



## Recommendations about support to make decisions

### Laws about guardians

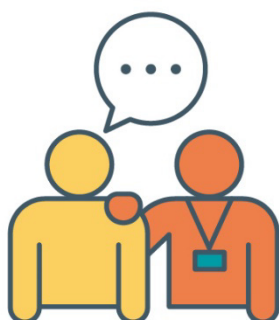


The Disability Royal Commission shared recommendations to make changes to the laws about guardians.

These changes would make the laws:



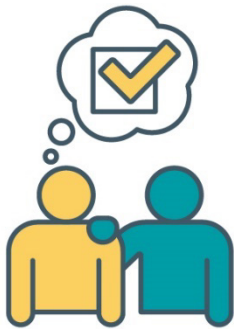
- better protect the rights of people with disability



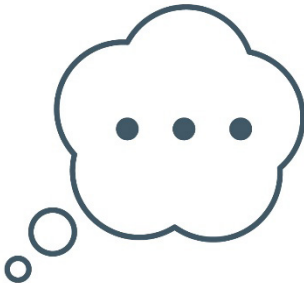
- better support people with disability to have their say.



One recommendation also says laws should make sure people get the information they need about **supported decision-making**.



Supported decision-making is when someone helps you make important decisions about your life and how you will live.

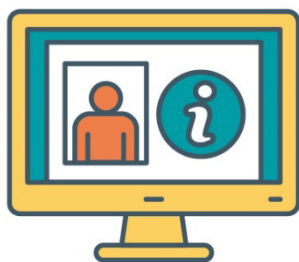


We need to think more about these recommendations.

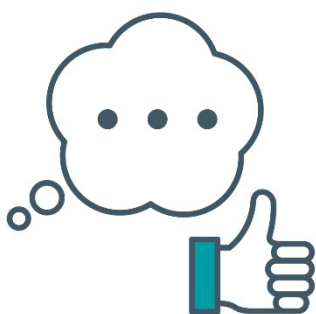
## Collect and share information



The Disability Royal Commission shared a recommendation about collecting and sharing information.

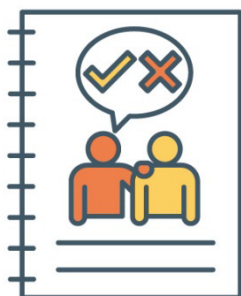


The recommendation says all governments should use the same way to collect and share information about people who have guardians.



We mostly agree with the goals in this recommendation.

## Guidelines for guardians



The Disability Royal Commission shared a recommendation about guidelines for guardians.

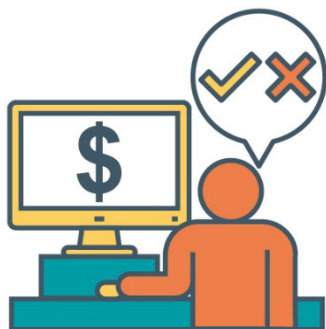


The recommendation says the guidelines should explain how to support people with disability to have their say about decisions that affect them.



We mostly agree with the goals in this recommendation.

## Update standards



The Disability Royal Commission shared a recommendation to update the **standards** for people who:

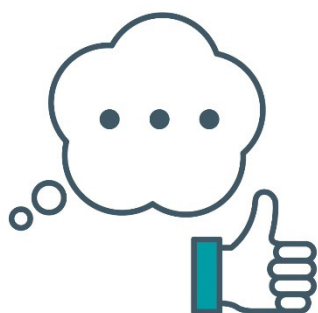
- make decisions for other people
- control other people's money for them.



Standards are rules about how to do things well.

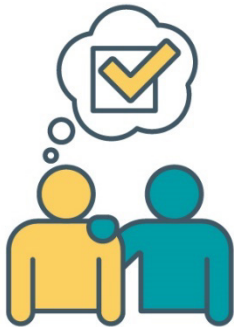
You can:

- meet standards
- go above standards.

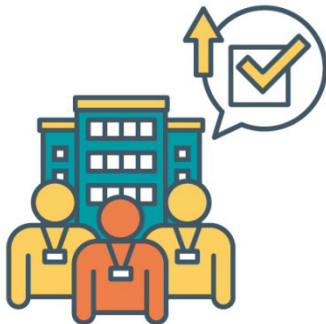


We mostly agree with the goals in this recommendation.

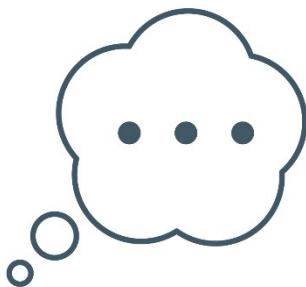
## Supported decision-making



The Disability Royal Commission shared a recommendation about supported decision-making.



The recommendation says state and territory governments should set up an organisation that would speak up for more supported decision-making.



We need to think more about this recommendation.

## Recommendations about Public Trustees



**Public Trustees** are people who can manage money for other people who can't do it themselves.

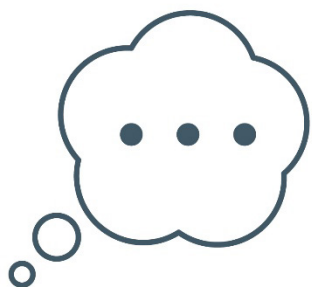
### Teach people how to manage their money



The Disability Royal Commission shared a recommendation for Public Trustees who manage money for people with disability.



The recommendation says Public Trustees should teach people with disability how to manage their money.



We need to think more about this recommendation.

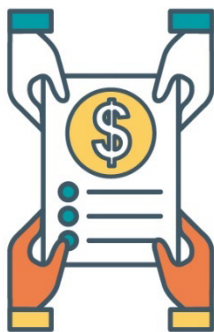
## The cost of Public Trustees



The Disability Royal Commission shared recommendations about the cost of Public Trustees.

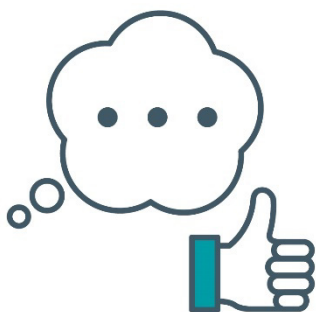


The recommendations say we should check how much Public Trustees cost to make sure it is fair.



The recommendations also say Public Trustees should share information about:

- how much they cost
- the services they provide.



We mostly agree with the goals in this recommendation.



## Recommendations about restrictive practices

### Rules about restrictive practices



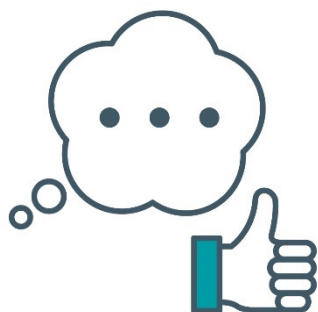
The Disability Royal Commission shared recommendations about rules for using restrictive practices.



One recommendation says laws should protect people with disability against restrictive practices they don't need.



One recommendation says we should have a list of restrictive practices that people can't use.



We mostly agree with the goals in this recommendation.

## Using less restrictive practices



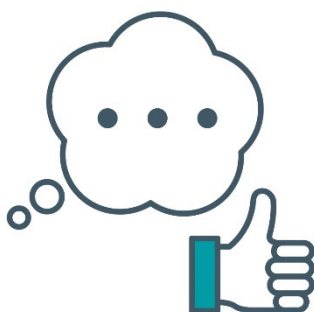
The Disability Royal Commission shared recommendations about using less restrictive practices.



One recommendation says we should have one way to collect information about when people are using restrictive practices in Australia.



One recommendation says we should make a plan about how to stop using restrictive practices over time.



We mostly agree with the goals in this recommendation.

## Recommendations about speaking up for people with disability

### Programs that speak up for people with disability



The Disability Royal Commission shared recommendations about programs that speak up for people with disability.



The recommendations say we should make sure these programs have enough money to:

- last a long time
- speak up for people who need support.

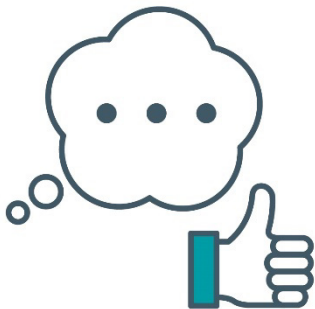
The recommendations also say we should:



- collect information about how well these programs support the community



- make sure these programs are safe for people from different backgrounds.



We mostly agree with the goals in this recommendation.

## Recommendations about accessible information

### A plan for accessible information



The Disability Royal Commission shared a recommendation about providing accessible information.



The recommendation says we should create a plan to make information more accessible to people with disability.



The recommendation also says we should think about the different needs of people with disability when we write the plan.



We mostly agree with the goals in this recommendation.

## Auslan interpreters

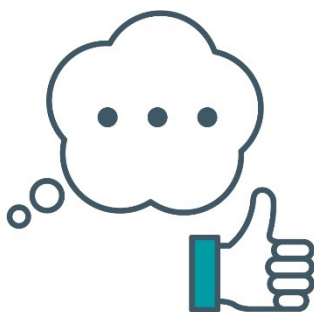


The Disability Royal Commission shared a recommendation about providing more **Auslan interpreters**.



People who are deaf or don't hear well use Auslan to communicate.

An Auslan interpreter is someone who uses Auslan to help people understand what someone says.



We mostly agree with the goals in this recommendation.

## Recommendations about using healthcare

### Support when getting healthcare



The Disability Royal Commission shared recommendations about support for people with disability when they need healthcare.

One recommendation says we should make sure people with disability can:



- use healthcare services



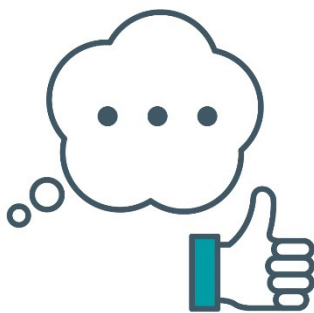
- always bring a support person when they need healthcare.



One recommendation says we should support healthcare providers to better meet the needs of different people with disability.



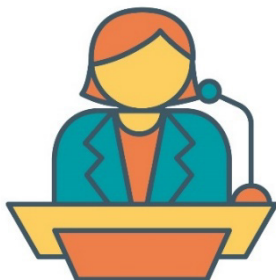
One recommendation says we should create a new job that supports people with disability to understand and use healthcare.



We mostly agree with the goals in this recommendation.



## Health ministers



The Disability Royal Commission shared a recommendation for health **ministers**.

A minister leads an area of government.



The recommendation says health ministers should use the Disability Royal Commission's plan to improve skills in health workers.



The plan is about skills to support people with **intellectual disability**.

An intellectual disability affects how you:



- learn new things
- solve problems
- communicate
- do things on your own.



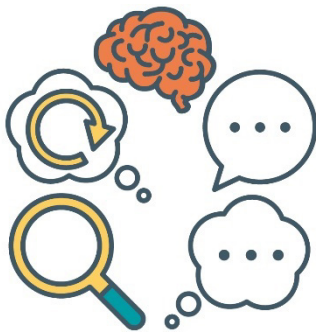
We mostly agree with the goals in this recommendation.

## Healthcare services for people with cognitive disability

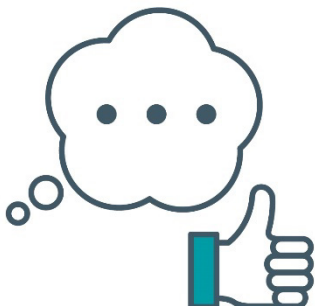


The Disability Royal Commission shared a recommendation to create healthcare services for people with **cognitive disabilities**.

Cognitive disabilities affect how people:



- think
- communicate
- understand
- focus on what they're doing
- remember.



We mostly agree with the goals in this recommendation.

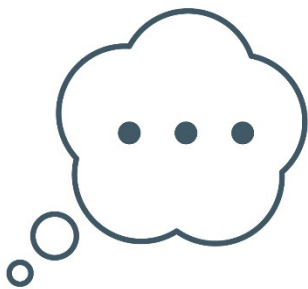
## Laws about the rights of people with disability to have children



The Disability Royal Commission shared a recommendation about laws that protect the rights of people with disability to have children.



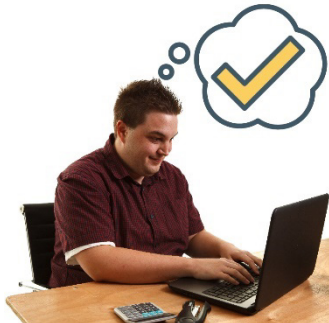
The recommendation says it should be against the law to take away the ability for people with disability to have children.



We need to think more about this recommendation.

# Word list

This list explains what the **bold** words in this document mean.



## **Accessible**

When services are accessible, they are easy to:

- find and use
- understand.



## **Auslan interpreter**

People who are deaf or don't hear well use Auslan to communicate.

An Auslan interpreter is someone who uses Auslan to help people understand what someone says.

## **Cognitive disabilities**

Cognitive disabilities affect how people:



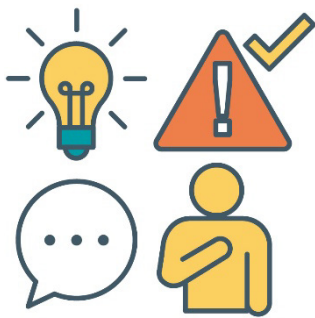
- think
- communicate
- understand
- focus on what they're doing
- remember.



## Guardian

A guardian is someone who can make decisions for you when you can't make your own decisions.

## Intellectual disability



An intellectual disability affects how you:

- learn new things
- solve problems
- communicate
- do things on your own.



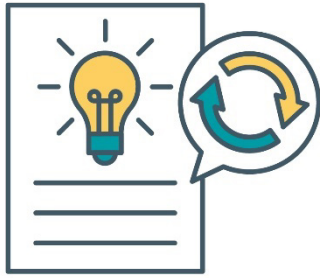
## Minister

A minister leads an area of government.



## Public Trustees

Public Trustees are people who can manage money for other people who can't do it themselves.



## Recommendations

The Disability Royal Commission shared ideas about what governments and services should change.

We call these ideas recommendations.



## Restrictive practices

Restrictive practices are actions that stop people from:

- moving
- doing what they want.



## Rights

Rights are rules about how everyone must treat you:

- fairly
- equally.

## Royal commission



A royal commission is an official way of looking into a big problem.

It helps us work out what:

- has gone wrong
- we need to improve.

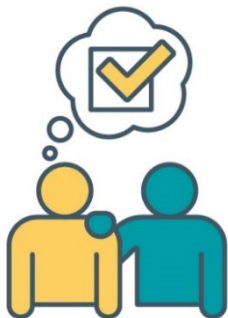
## Standards



Standards are rules about how to do things well.

You can:

- meet standards
- go above standards.



## Supported decision-making

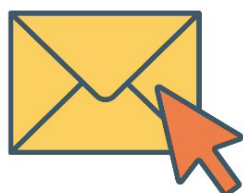
Supported decision-making is when someone helps you make important decisions about your life and how you will live.

## Contact us



You can call us.

**(08) 8415 4383**



You can send us an email.

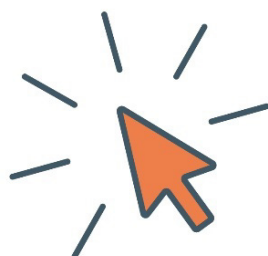
**[DHSDisabilityRoyalCommission@sa.gov.au](mailto:DHSDisabilityRoyalCommission@sa.gov.au)**



You can write to us.

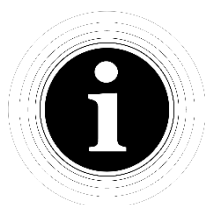
GPO Box 292

Adelaide SA 5001



You can visit our website.

**[www.dhs.sa.gov.au/disability-royal-commission](http://www.dhs.sa.gov.au/disability-royal-commission)**



The Information Access Group created this Easy Read document using stock photography and custom images.

The images may not be reused without permission.

For any enquiries about the images, please visit

**[www.informationaccessgroup.com](http://www.informationaccessgroup.com)**.

Quote job number 5839-D.