



**Government of
South Australia**

Our response to the Disability Royal Commission

Recommendations about housing

Easy Read version



How to use this document



The Government of South Australia wrote this document.

When you read the word 'we', it means the Government of South Australia.



This document is part of our response to the Disability Royal Commission.

It is about part **7** of their final report.



We wrote this information in an easy to read way.

We use pictures to explain some ideas.

Bold
Not bold

We wrote some important words in **bold**.

This means the letters are thicker and darker.



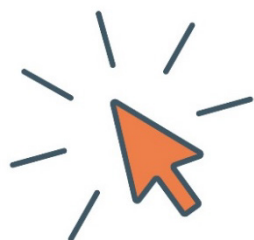
We explain what these bold words mean.

There is a list of these words on page **23**.



This Easy Read plan is a summary of our response to the Disability Royal Commission.

This means it only includes the most important ideas.



You can find the other document on our website.

www.dhs.sa.gov.au/disability-royal-commission



You can ask for help to read this document.

A friend, family member or support person may be able to help you.



We recognise Aboriginal peoples as the traditional owners of the land we live on – South Australia.



They were the first people to live on and use the:

- land
- waters.



We also recognise First Nations peoples who:

- live in South Australia now
- visit South Australia.

What's in this document?

About the Disability Royal Commission 5

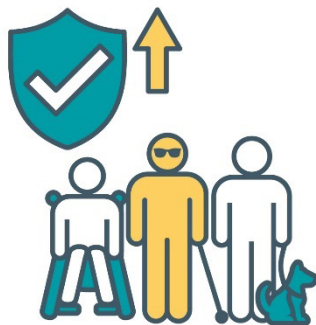
About the recommendations 6

Our response to the recommendations 7

Word list 23

Contact us 27

About the Disability Royal Commission



The Australian Government created a **royal commission** to find out how to make our community safer for people with disability.



A royal commission is an official way of looking into a big problem.

It helps us work out what:

- has gone wrong
- we need to improve.



We call it the Disability Royal Commission.



The Disability Royal Commission ran from **2019** to **2023**.

About the recommendations

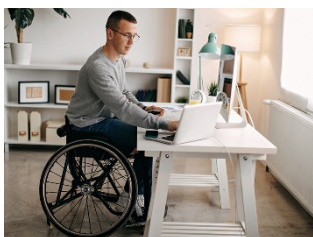


The Disability Royal Commission shared ideas about what governments and services should change.

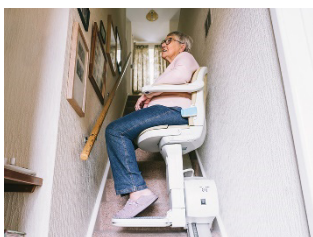
We call these ideas **recommendations**.



This document explains our response to recommendations about housing.

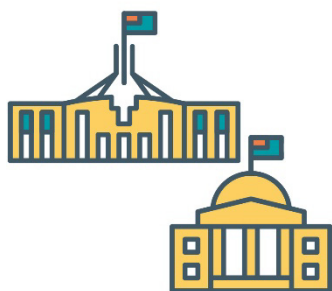


The Disability Royal Commission says housing should be more **accessible**.



When housing is accessible it:

- supports what people need
- is easy to move around in.



We are working on some of the recommendations with:

- the Australian Government
- other state and territory governments.

Our response to the recommendations

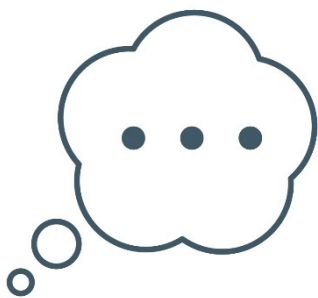
On the following pages we explain the recommendations we:



- agree with



- mostly agree with



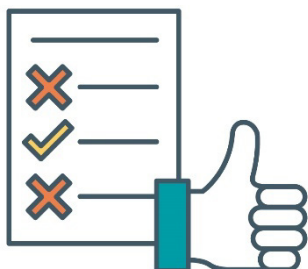
- need to think more about.

Recommendations about rules for housing

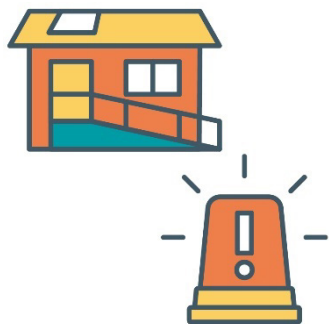
Rules for accessible housing



The Disability Royal Commission shared a recommendation to provide accessible housing that meets certain rules in Australia.



The recommendation says governments should make a plan to make sure everyone meets these rules.

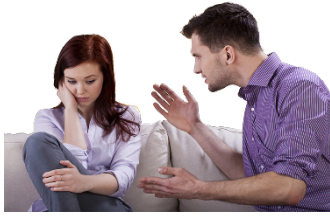


The recommendation also says governments need to provide more accessible housing that meets these rules for people in an **emergency**.



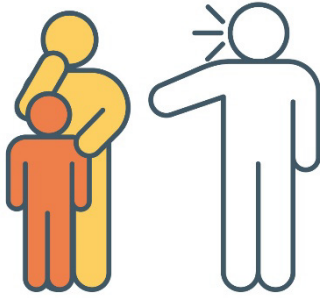
An emergency:

- is a dangerous situation
- is a thing we don't expect to happen
- can put our health and safety at risk.

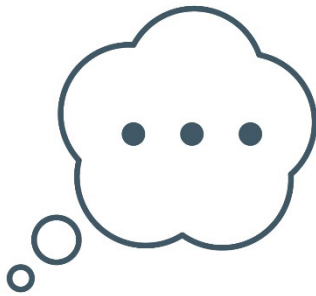


For example, if someone needs safe housing to leave **family and domestic violence**.

Family and domestic violence is when someone close to you hurts you, such as:



- your partner, like your boyfriend or girlfriend
- a member of your family
- someone who takes care of you
- someone you live with.



We need to think more about this recommendation.



We have already started work to provide more accessible housing in South Australia.



For example, we started using new rules about building accessible housing in **April 2022**.

Rules for social housing



The Disability Royal Commission shared a recommendation to improve rules for **social housing**.

Social housing is homes that cost less to live in.

The government helps pay for social housing.

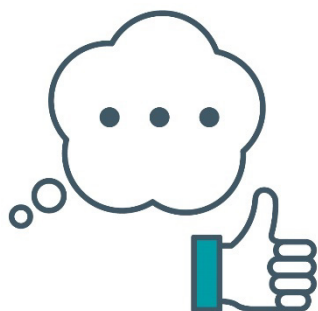
The recommendation says governments should improve these rules to make sure:



- social housing is accessible for people with disability



- decisions about social housing are fair.



We mostly agree with the goals in this recommendation.

Rules for supported accommodation



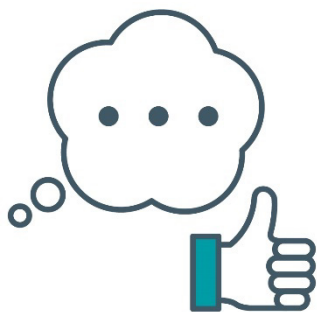
The Disability Royal Commission shared a recommendation about creating rules to improve how **supported accommodation** works.

Supported accommodation is a type of housing that is designed for people with disability who need support.



The recommendation says governments should make sure people who run supported accommodation:

- follow the rules
- provide people with disability the support they need.



We mostly agree with the goals in this recommendation.

Recommendation to provide more accessible housing



The Disability Royal Commission shared a recommendation for governments to work with the National Disability Insurance Agency (NDIA) to provide more accessible housing.



The recommendation says governments and the NDIA should also work with people who take part in the National Disability Insurance Scheme (NDIS).



This will make sure the housing meets their needs.

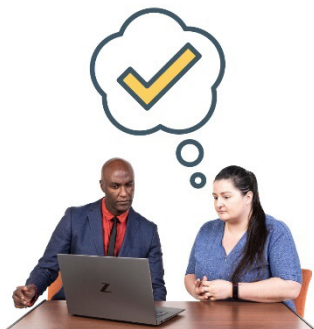


The recommendation says it should be easier for people who take part in the NDIS to use supported accommodation.



For example, **specialist disability accommodation (SDA)**.

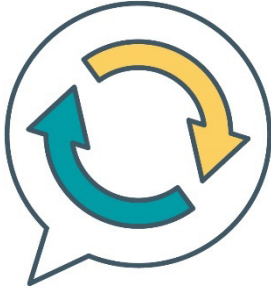
SDA is housing for people with disability who need extra support most of the time.



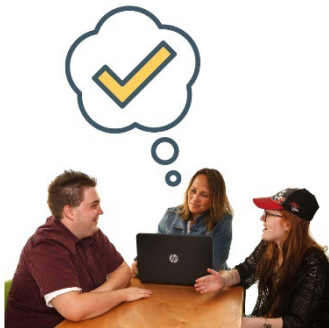
The recommendation says governments and the NDIA need to help people with disability:

- understand their housing options
- get support to live in the housing they choose.

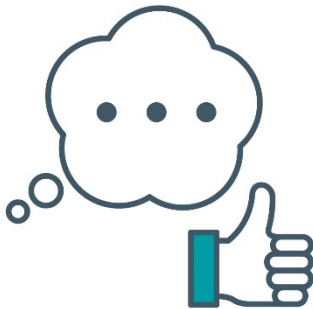
The recommendation also says governments and the NDIA need to:



- tell people about the changes they will make



- work with the disability community to understand how well the changes are working.



We mostly agree with the goals in this recommendation.

Recommendation to protect rights



Rights are rules about how people must treat you:

- fairly
- equally.



The Disability Royal Commission shared a recommendation to protect the rights of people with disability who **rent**.

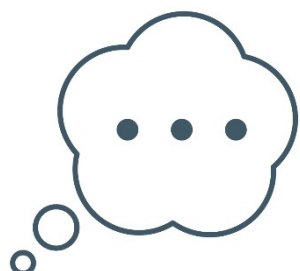
Rent is the money a person pays to live in a home someone else owns.



The recommendation says governments should check the laws for people who rent to make sure they protect people with disability.



The recommendation also says governments should check the laws to make sure they protect people living in supported accommodation.



We need to think more about this recommendation.

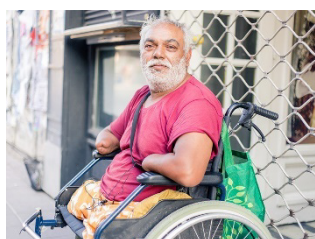
Recommendations about plans for housing

Plans that focus on people with disability

The Disability Royal Commission shared a recommendation to focus more on people with disability when governments make plans for:



- housing



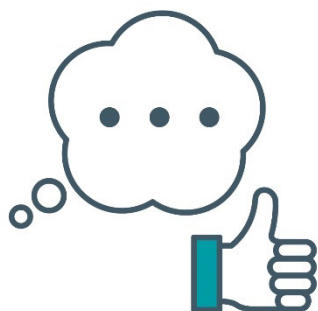
- people who are **homeless**.

People who are homeless don't have a home.

They must find a place to sleep each night.



This includes the National Housing and Homelessness Agreement.



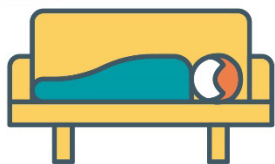
We mostly agree with the goals in this recommendation.

Australia's Disability Strategy



Australia's Disability Strategy is a plan about supporting people with disability in all areas of their life.

In this document, we call it the Strategy.



The Disability Royal Commission shared a recommendation for the Strategy to focus more on how to stop people with disability from becoming homeless.



We agree with this recommendation.

The National Housing and Homelessness Plan



The Disability Royal Commission shared a recommendation for the National Housing and Homeless Plan.

The recommendation says the National Housing and Homeless Plan should support governments to:



- find ways to better understand the different needs of people with disability



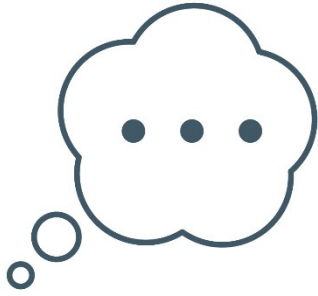
- find out if services have enough money to support people who are homeless



- support people with disability to find housing that meets their needs



- find out if they can set up free legal advice for people with disability who are homeless.



We need to think more about this recommendation.

Recommendation to provide support after using government services



The Disability Royal Commission shared a recommendation to support people with disability when they leave government services.

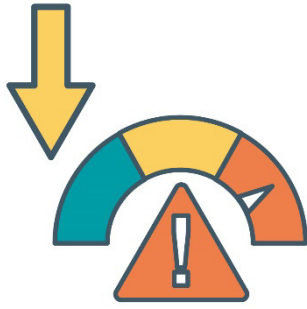


For example, when they leave:

- health services
- mental health services
- prisons.



The recommendation says governments should make sure all people with disability can find a home that meets their needs when they leave government services.



This means less people with disability will be at risk of becoming homeless when they leave government services.

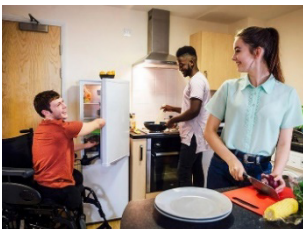


We mostly agree with the goals in this recommendation.

Recommendations about ending group homes



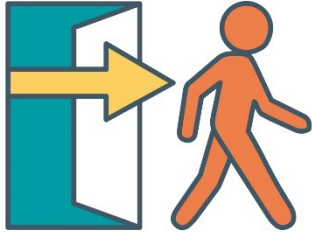
The Disability Royal Commission shared recommendations about making a plan to end **group homes**.



Group homes are places where people with disability:

- live together
- get support.

One recommendation says governments should make a plan that:



- supports people with disability to leave group homes



- supports people with disability to find housing that supports what they need



- ends group homes within the next 15 years.



One recommendation explains what governments could do to end group homes:

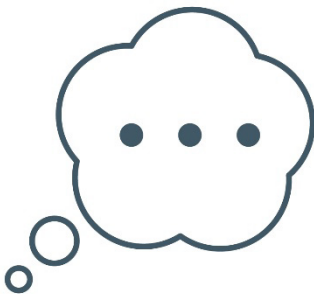
- straight away
- over time.



For example, they can stop creating new group homes now.



The recommendation also explains that governments should think about how much housing there is when they make their plan to end group homes.



We need to think more about these recommendations.

Word list

This list explains what the **bold** words in this document mean.



Accessible

When housing is accessible it:

- supports what people need
- is easy to move around in.



Emergency

An emergency:

- is a dangerous situation
- is a thing we don't expect to happen
- can put our health and safety at risk.

Family and domestic violence

Family and domestic violence is when someone close to you hurts you, such as:



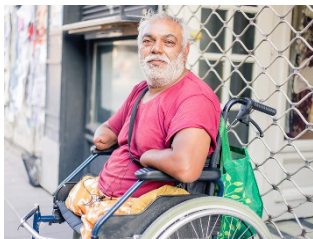
- your partner, like your boyfriend or girlfriend
- a member of your family
- someone who takes care of you
- someone you live with.

Group homes



Group homes are places where people with disability:

- live together
- get support.



Homeless

People who are homeless don't have a home.

They must find a place to sleep each night.



Recommendations

The Disability Royal Commission shared ideas about what governments and services should change.

We call these ideas recommendations.



Rent

Rent is the money a person pays to live in a home someone else owns



Rights

Rights are rules about how people must treat you:

- fairly
- equally.



Royal commission

A royal commission is an official way of looking into a big problem.

It helps us work out what:

- has gone wrong
- we need to improve.



Social housing

Social housing is homes that cost less to live in.

The government helps pay for social housing.



Specialist disability accommodation (SDA)

SDA is housing for people with disability who need extra support most of the time.



Supported accommodation

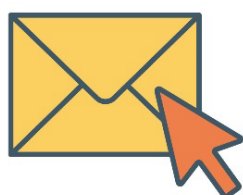
Supported accommodation is a type of housing that is designed for people with disability who need support.

Contact us



You can call us.

(08) 8415 4383



You can send us an email.

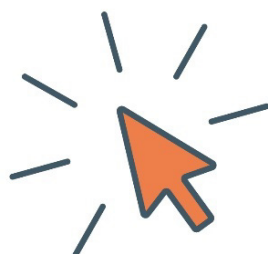
DHSDisabilityRoyalCommission@sa.gov.au



You can write to us.

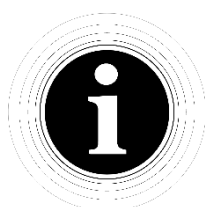
GPO Box 292

Adelaide SA 5001



You can visit our website.

www.dhs.sa.gov.au/disability-royal-commission



The Information Access Group created this Easy Read document using stock photography and custom images.

The images may not be reused without permission.

For any enquiries about the images, please visit

www.informationaccessgroup.com.

Quote job number 5839-G.