



**Government of
South Australia**



human
services

Autism Strategy Action Plan 2025–2029

Easy Read version



Acknowledgement of Country



Aboriginal peoples are the First Peoples of South Australia.



They have always looked after Country.

Country means the land, water, sky and everything within them.



We respect the important connection that Aboriginal peoples have with Country.



And we respect their Elders from the past and now.

How to use this plan



Government of
South Australia

We are the Government of South Australia

Department of Human Services.



human
services

We wrote this plan.



We wrote some words in **bold**.

We explain what these words mean.

There is a list of these words on page **23**.



You can ask someone you trust for support to:

- read this plan
- find more information.



This is an Easy Read summary of another plan.

It only includes the most important ideas.



You can find the other plan on our website.

autismstrategy.sa.gov.au

What's in this plan?

About the Autism Strategy Action Plan	5
What our plan will focus on	7
Getting an autism diagnosis	9
Working and earning money	12
Finding and using services	15
Taking part in the community	19
More information	22
Word list	23

About the Autism Strategy Action Plan



This is our Autism Strategy Action Plan.

We just call it the plan.

Autism can affect how you:



- think



- feel



- communicate



- understand people.



The plan explains what we will do to achieve the goals in the South Australia Autism **Strategy** 2024–2029.

A strategy is a government plan for how to do things in the future.



We asked people in the Autistic community what words they prefer to use to talk about themselves.

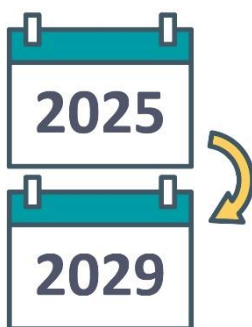


Many people told us they prefer the words 'Autistic people'.

We use these words in our Autism Strategy Action Plan.



But we understand that each person might prefer different words for themselves.



We will use the plan from 2025 to 2029.

What our plan will focus on



Our actions follow 4 focus areas from the Autism Strategy.

This includes:



- Getting an autism diagnosis



- Working and earning money



- Finding and using services



- Taking part in the community



We explain these focus areas on the following pages.



You can also find more Easy Read information about the focus areas in the Autism Strategy.



You can read the Autism Strategy on the Government of South Australia's website.

www.autismstrategy.sa.gov.au

Getting an autism diagnosis



We want to make it easier to get an autism **diagnosis**.



A diagnosis is when a doctor:

- checks your health
- says what health condition they think you have.

What we will do



We will help more people in the community learn how to get an autism diagnosis.



We will create information about autism diagnosis that is easy to:

- read
- find and use.



We will create more autism diagnosis services and supports for:

- children and young people
- families and carers.



This includes services and supports in areas very far away from cities and towns.

We will share information with our staff to help them:



- better understand autism diagnosis



- better support people looking for autism diagnosis services.

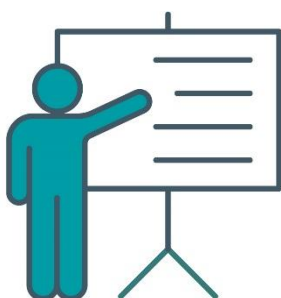


We will look at services and supports that people can use after an autism diagnosis.

We will keep updating:



- information about these services and supports



- training for these services and supports.

Working and earning money

We want to make it easier for Autistic people to:

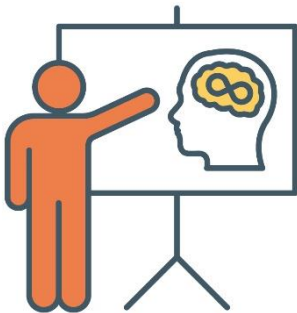


- change from school to work



- do well in their job.

What we will do



We will make sure government workers get training to better understand autism.



We will help government workers understand how hiring more Autistic people will help their work.



We will make sure our workplaces are more **inclusive** for Autistic people.



When something is inclusive, everyone:

- can take part
- feels like they belong.



We will make sure the way we hire people is inclusive.



We will create plans to improve the health of Autistic government workers.



For example, we will create spaces in our workplaces that:

- support what Autistic people need
- help Autistic people feel safe.



We will support Autistic people to work in the government for a long time.



We will support Autistic people to find work in different ways.



For example, we will offer Autistic people the chance to **volunteer**.



When you volunteer, you:

- work but you don't get paid
- do work that helps the community.



We will create programs to support Autistic people to find a job after school.

Finding and using services

We want services to:



- be easy for Autistic people to find and use



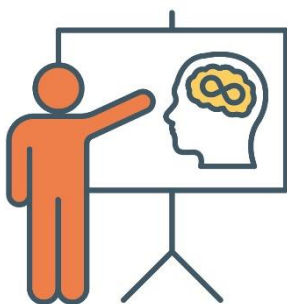
- understand how to support Autistic people.

What we will do

We will make sure information about supports and services are:



- up to date
- easy to find and use
- inclusive.



We will offer autism training to workers who talk to people a lot for their job.

For example, support workers.



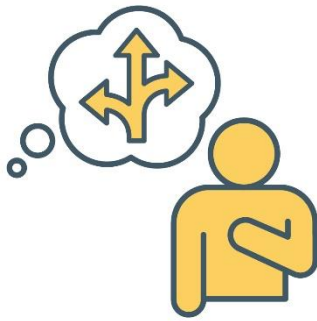
We will make sure supports and services are inclusive for Autistic people.



We will also update information and services to make sure they support the different needs of parents and carers of Autistic people.

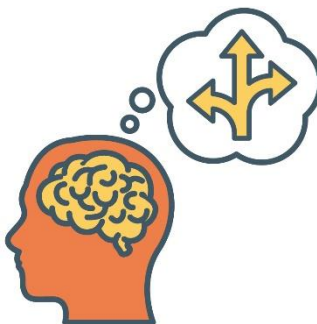


We will work with experts when we create supports and services for Autistic people.



We will also work with Autistic people to make sure services support:

- **neurodiversity**
- what Autistic people need.



Neurodiversity is the different ways people's brains can work.



We will create services and supports for different **cultures**.

Culture is the way a group of people live and what they believe.



We will make sure there are different types of services and supports for people to choose from.

For example, services and supports that respect:



- neurodiversity



- a person's culture.



We will improve the way we collect information about the different groups of people who use state government:

- services
- supports.

Taking part in the community



We want community events and spaces to work well for Autistic people.

For example:



- transport



- sports events.

What we will do



We will improve **community transport** for Autistic people.

Community transport is a service people can use to help them travel to and from activities.



This includes making sure community transport is easy for Autistic people to find and use.



We will make sure community events support the different needs of people.



We will share information about how to support Autistic people to:

- take part in events
- feel like they belong at events.



We will improve programs and services to make sure Autistic people can take part in them.

For example, activities and events.



We will also work with Autistic people to make sure activities and services are inclusive.

More information



You can contact us if you'd like more information about the plan.



You can send us an email.

SAAutismStrategy@sa.gov.au



You can visit our website.

autismstrategy.sa.gov.au

Word list

This list explains what the **bold** words in this document mean.

Autism

Autism can affect how you:



- think



- feel



- communicate



- understand people.



Community transport

Community transport is a service people can use to help them travel to and from activities.



Culture

Culture is the way a group of people live and what they believe.



Diagnosis

A diagnosis is when a doctor:

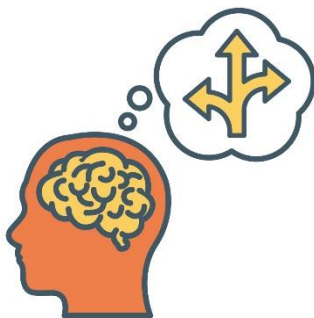
- checks your health
- says what health condition they think you have.



Inclusive

When something is inclusive, everyone:

- can take part
- feels like they belong.



Neurodiversity

Neurodiversity is the different ways people's brains can work.



Strategy

A strategy is a government plan for how to do things in the future.



Volunteer

When you volunteer, you:

- work but you don't get paid
- do work that helps the community.



The Information Access Group created this Easy Read document using stock photography and custom images.

The images may not be reused without permission.

For any enquiries about the images, please visit

www.informationaccessgroup.com.

Quote job number 6560.