



**Government of
South Australia**

Our response to the Disability Royal Commission

Recommendations about supporting First Nations people with disability

Easy Read version



How to use this document



The Government of South Australia wrote this document.

When you read the word 'we', it means the Government of South Australia.



This document is part of our response to the Disability Royal Commission.

It is about part **9** of their final report.



We wrote this information in an easy to read way.

We use pictures to explain some ideas.

Bold

Not bold

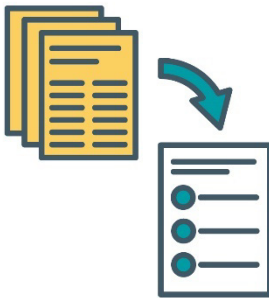
We wrote some important words in **bold**.

This means the letters are thicker and darker.



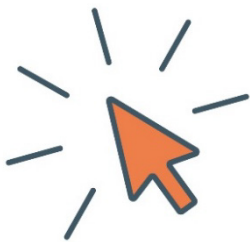
We explain what these bold words mean.

There is a list of these words on page 20.



This Easy Read plan is a summary of our response to the Disability Royal Commission.

This means it only includes the most important ideas.



You can find the other document on our website.

www.dhs.sa.gov.au/disability-royal-commission

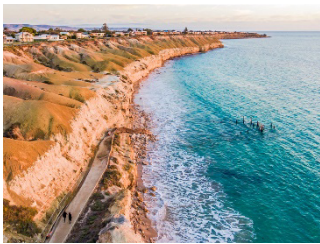


You can ask for help to read this document.

A friend, family member or support person may be able to help you.



We recognise Aboriginal peoples as the traditional owners of the land we live on – South Australia.



They were the first people to live on and use the:

- land
- waters.



We also recognise First Nations peoples who:

- live in South Australia now
- visit South Australia.



This document includes photos of First Nations people.



It might contain images of people who have passed away.

What's in this document?

About the Disability Royal Commission 6

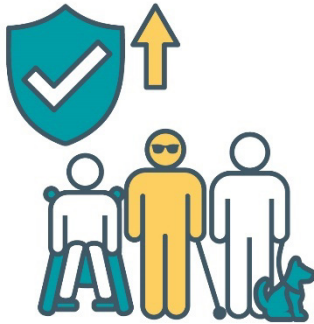
About the recommendations 7

Our response to the recommendations 9

Word list 20

Contact us 23

About the Disability Royal Commission



The Australian Government created a **royal commission** to find out how to make our community safer for people with disability.



A royal commission is an official way of looking into a big problem.

It helps us work out what:

- has gone wrong
- we need to improve.



We call it the Disability Royal Commission.



The Disability Royal Commission ran from **2019** to **2023**.

About the recommendations



The Disability Royal Commission shared ideas about what governments and services should change.

We call these ideas **recommendations**.



This document explains our response to recommendations about supporting First Nations people with disability.

This includes recommendations to support cultural safety.

Your **culture** is:

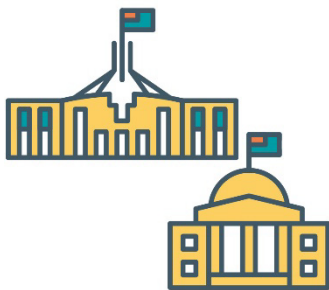


- your way of life
- how you think or act now because of how you grew up
- your beliefs
- what is important to you.



Cultural safety is when we:

- respect people's culture
- understand how to support people
- help people feel like they belong.



We are working on some of the recommendations with:

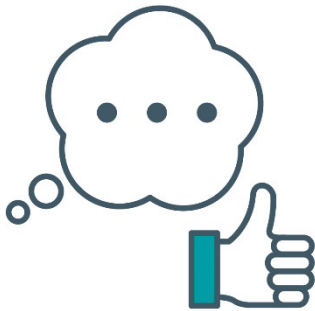
- the Australian Government
- other state and territory governments.

Our response to the recommendations

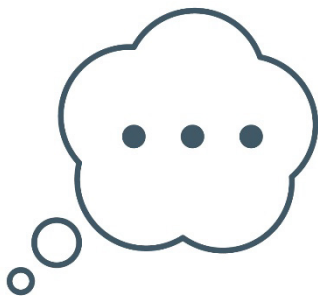
On the following pages we explain the recommendations we:



- agree with



- mostly agree with



- need to think more about.

Cultural safety for parent assessments



The Disability Royal Commission shared a recommendation about **parent assessments**.

Parent assessments help the government work out:

- how a parent's disability affects their life
- what supports they need.



The recommendation says governments should make new rules that support cultural safety for parent assessments.



Governments should work with:

- First Nations parents with disability
- organisations who speak up for First Nations people with disability.



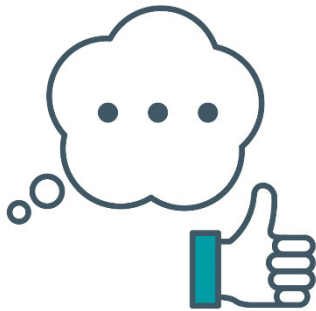
The recommendation also says governments should work with First Nations **child protection** services.

Child protection services help children stay safe.



Child protection can decide if a child:

- is not safe in their home
- must live with someone else.



We mostly agree with the goals in this recommendation.

First Nations children in out-of-home care



The Disability Royal Commission shared a recommendation about First Nations children under 5 years old who are coming into **out-of-home care**.



Out-of-home care is housing for a child who:

- can't live with their parents or carer
- might live in a home with a different family.

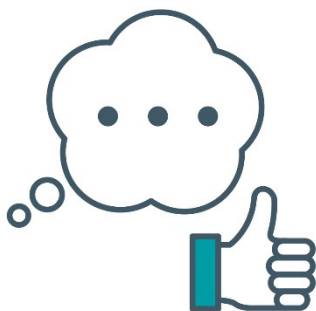


The recommendation says that state and territory governments should check how these children are growing.



Governments should use a tool that supports cultural safety.

This tool is called the Ages and Stages Questionnaire – Talking about Raising Aboriginal Kids (ASQ-TRAK).



We mostly agree with the goals in this recommendation.

Cultural safety in the justice system



The Disability Royal Commission shared a recommendation to check the cultural safety of **justice systems**.



Justice systems includes:

- police
- the courts
- the law.



We mostly agree with the goals in this recommendation.

A First Nations Disability Forum



The Disability Royal Commission shared a recommendation for governments to create a First Nations Disability Forum.

In this document, we just call it the **forum**.



A forum is where a group of people share and talk about ideas.

The recommendation says the forum should include:



- First Nations people with disability
- organisations that support First Nations people with disability
- organisations that speak up for First Nations people with disability.



The recommendation also says governments should work with the forum to make decisions that affect First Nations peoples.



We mostly agree with the goals in this recommendation.

A stronger disability sector



The Disability Royal Commission shared a recommendation to make the **disability sector** stronger.

The disability sector includes:



- people with disability
- service providers
- support workers
- organisations that speak up for people with disability.



The recommendation says the forum should support the Disability Sector Strengthening Plan.

In this document we just say the Disability SSP.



The Disability SSP is a plan to make sure people have the right skills to support First Nations people with disability.

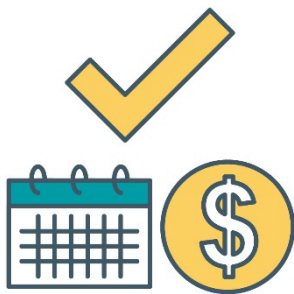


The recommendation says governments should share a new Disability SSP by the end of September 2024.

The recommendation also says that governments should:



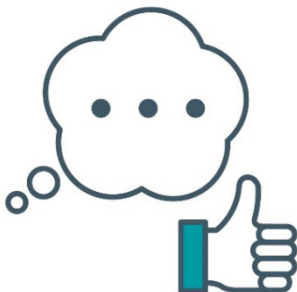
- find out what areas the Disability SSP needs to focus on



- make sure the Disability SSP has enough time and money



- share how well the Disability SSP is working every year.



We mostly agree with the goals in this recommendation.

More First Nations disability workers in remote areas



The Disability Royal Commission shared a recommendation about First Nations disability workers in **remote** areas.

If an area is remote, it is far away from any cities or towns.

The recommendation says governments should make a plan to support:



- First Nations disability workers in remote areas to build their skills



- more First Nations people in remote areas to become disability workers.

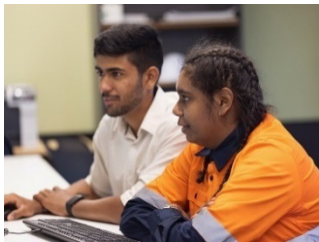


The recommendation also says governments should work with First Nation organisations to make this plan.

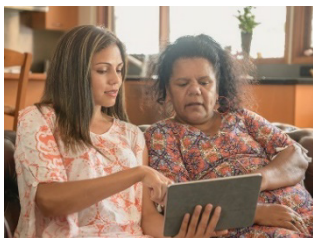
The plan should look at how to use money from the government to:



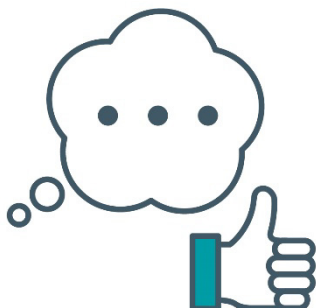
- find out what supports a community need



- support First Nations people to learn new skills.



This includes the skills First Nations families need to support a person with disability.



We mostly agree with the goals in this recommendation.

Word list

This list explains what the **bold** words in this document mean.



Child protection

Child protection services help children stay safe.



Cultural safety

Cultural safety is when we:

- respect people's culture
- understand how to support people
- help people feel like they belong.

Culture

Culture is:



- your way of life
- how you think or act now because of how you grew up
- your beliefs
- what is important to you.

Disability sector

The disability sector includes:



- people with disability
- service providers
- support workers
- organisations that speak up for people with disability.



Forum

A forum is where a group of people share and talk about ideas.

Justice system

Justice systems includes:



- police
- the courts
- the law.

Out-of-home care

Out-of-home care is housing for a child who:



- can't live with their parents or carer
- might live in a home with a different family.



Parent assessments

Parent assessments help the government work out:

- how a parent's disability affects their life
- what supports they need.



Recommendations

The Disability Royal Commission shared ideas about what governments and services should change.

We call these ideas recommendations.



Remote

If an area is remote, it is far away from any cities or towns.



Royal commission

A royal commission is an official way of looking into a big problem.

It helps us work out what:

- has gone wrong
- we need to improve.

Contact us



You can call us.

(08) 8415 4383



You can send us an email.

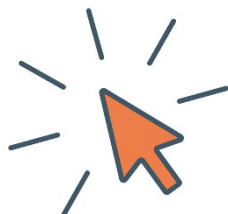
DHSDisabilityRoyalCommission@sa.gov.au



You can write to us.

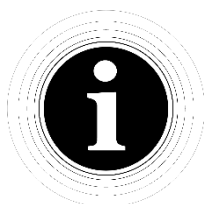
GPO Box 292

Adelaide SA 5001



You can visit our website.

www.dhs.sa.gov.au/disability-royal-commission



The Information Access Group created this Easy Read document using stock photography and custom images.

The images may not be reused without permission.

For any enquiries about the images, please visit

www.informationaccessgroup.com.

Quote job number 5839-I.