



Government of **Western Australia**
Department of **Communities**

Positive Behaviour Support & Collaborative Practice – Learnings and Reflections from WA

6 March 2024

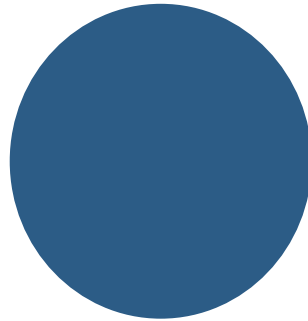
Craig McIver

(Consultant Psychologist)





What do you see?



Behaviour & Underlying Needs



We need to know the person and the things that impact on them and those around them



It is my right
to make
decisions

I have my own
will and
preferences

I need to be
involved in my
behaviour
planning



I can make my
own decisions

I might need
support to help
make decisions
and choices

My choices
and decisions
might change

People who
know me well
need to be
included

Supported Decision Making Principles



- People with disability determine their **own best interests** and exercise **choice and control** and
- Access the **support they need to make decisions** and **communicate their needs and choices**.
- **Positive outcomes and quality of life** improvements for people with disability must be **central in decision-making processes**
- People with disability are **presumed to have capacity** to make decisions, unless proven otherwise for a specific decision at a specific time.
- People with disability must have **access to effective person-centred behaviour support**

Keeping the focus on the Person



Positive Behaviour Support (PBS)



Engagement & Collaboration

Neutrality

Curiosity

Non-expert

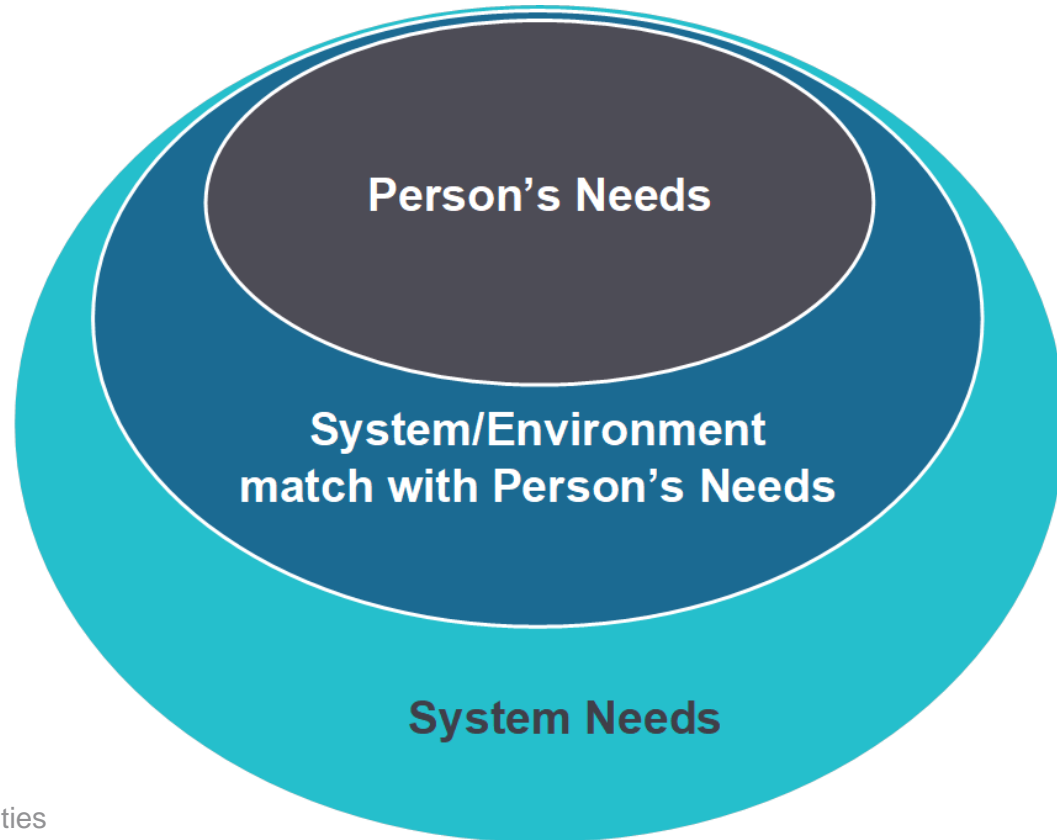
Working in
partnership



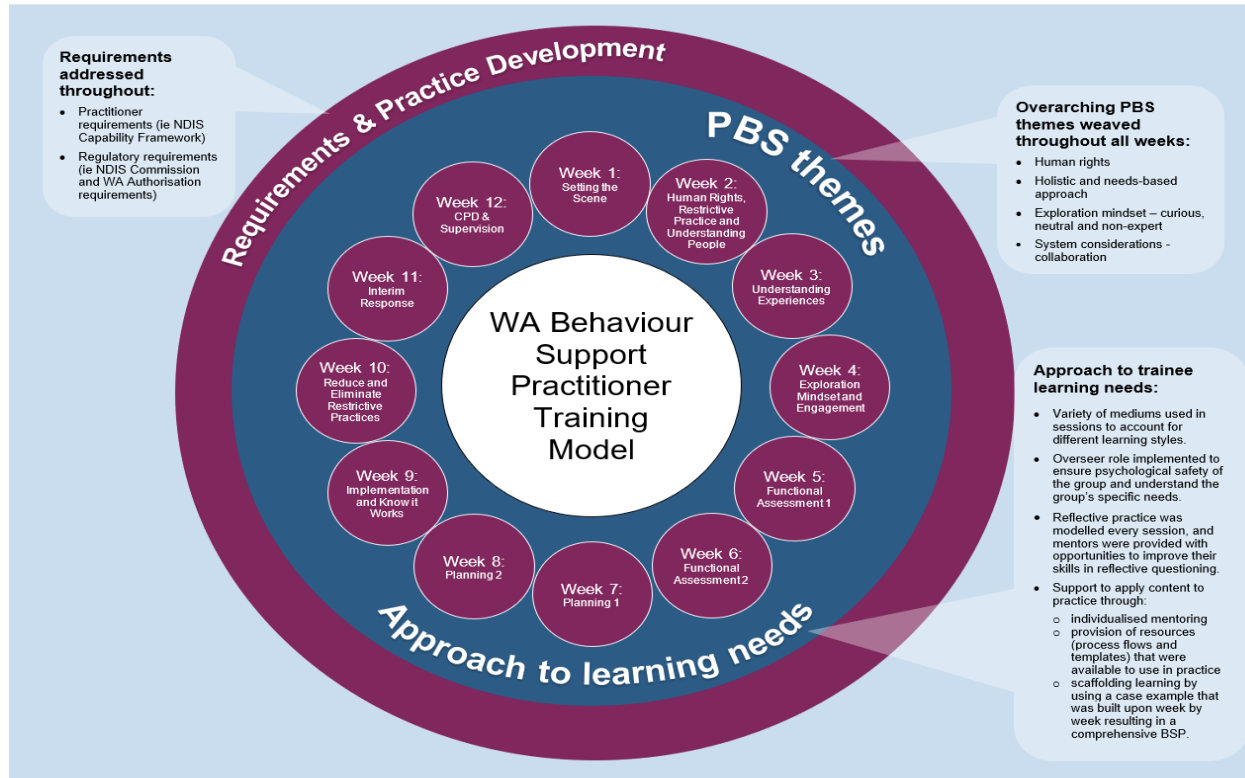
Strengths-based
focus

Focusing on
needs

PBS: Layers of needs



WA Behaviour Support Practitioner Training



Communities of practice

- Providers
(Implementing and
Behaviour Support)
- Regional
- Behaviour Support
Practitioners



Behaviour Support Practitioner Register – Authorisation of Restrictive Practices WA



Keeping the Person in the centre and meeting service requirements



Questions



Resources

[Authorisation of restrictive practices \(www.wa.gov.au\)](http://www.wa.gov.au) – access resources, past copies of our Bulletin and subscribe to the ARP Bulletin here.

Gore et al. (2022) Positive Behavioural Support in the UK: A State of the Nation Report. [International Journal of Positive Behaviour Support](#). Vol. 12, Supplement1.

McGill et al (2020) Capable Environments: <https://www.bild.org.uk/wp-content/uploads/2020/05/McGill-et-al-Capable-environments.pdf>

[Promoting Positive Behaviour Support Practice \(promotingpbspractice.com\)](http://promotingpbspractice.com)

WAI S Supported Decision Making resources:
<https://waindividualisedservices.org.au/supported-decision-making-resources/>

My Email: craig.mciver@communities.wa.gov.au

Thank you